

Your Guide to the Radiotherapy Department in The Lanarkshire Beatson Cancer Centre



Welcome to the Lanarkshire Beatson Cancer Centre

This leaflet is for patients, families and carers attending the cancer centre for radiotherapy treatment. It provides a general guide to the radiotherapy department and other services you may need to use.

You will be given specific information regarding your treatment from your doctor, radiographers or nurses.

Where are we?

We are located within the grounds of Lanarkshire's Monklands General Hospital at:

Monklands Hospital, Monkscourt Avenue, Airdrie, ML6 0JS

Tel: ☎ 01698 752200

The centre has a direct entrance to the radiotherapy department. Please refer to the map at the back of this booklet for further directions.

How do I get to the centre?

Travelling by bus or train

Buses and trains run regularly to the Lanarkshire Beatson. Our local railway stations are Coatdyke (train services from East or West) and Whifflet or Coatbridge (train services from North or South).

Further travel advice can be found from:

- Traveline Scotland - Tel: ☎ 0871 200 2233
 - 🌐 www.travelinescotland.com
- First Bus (local bus) ☎ 0345 646 0707
 - 🌐 www.firstbus.co.uk/journey-planner
- National Rail Enquiries ☎ 03457 484950
 - 🌐 www.nationalrail.co.uk

Travelling by ambulance or volunteer transport

- Where possible please use your own or public transport.
- If you are unable to do this because of your illness you may be eligible for ambulance transport. Your doctor will discuss this with you.
- If you think you may qualify for transport please call **☎ 0300 123 1236** at least **3 days** before your appointment. Lines are open **Monday- Friday, 8.00am to 6.00pm**, and **Saturday 8.00am to 1.00pm**.

Travelling by car

Car parking is free of charge but is very limited. You might find it easier to make alternative arrangements. Please do not park in the disabled bays (unless you hold a current blue badge).

Travel expenses

If you do not qualify for ambulance transport or the volunteer driver service you may be entitled to claim your travelling expenses. If you are receiving benefits and think you may be eligible for this, you can attend the Patient Services Desk at the main entrance to Monklands Hospital. Please note you will need to bring proof of your benefits and travel receipts when you claim.

Radiotherapy department

Please come to the radiotherapy department no more than 30 minutes before your appointment time (unless you are told otherwise).

Please check in at the reception when you arrive. If you need a wheelchair or any assistance, please let the receptionist know.

The radiotherapy department is always busy and although we try to keep to time, sometimes this is not possible. If we are running late for your appointment we will tell you the reason and how long the delay is likely to be. We would appreciate your patience.

To help us identify the correct patient we will ask your date of birth and address. We also take a photograph at your initial visit

for a visual ID check; we will always ask your permission before we do this.

The staff who plan and deliver your treatment are called Therapeutic Radiographers and are registered with the Health and Care Professions Council. We have both male and female staff.

We are a teaching centre so student radiographers may be present during your planning and treatment sessions. If you would prefer not to have a student present, please let a member of staff know.

What happens at radiotherapy planning and treatment?

A detailed description of treatment, side effects and how best to cope is described in our other leaflets for your specific cancer diagnosis. If you have not received this information please let your radiographers know. The following is a brief general guide.

- Your radiotherapy treatment is planned on a CT scanner and your treatment will be delivered by machines called linear accelerators. The Lanarkshire Beatson has one CT scanner and two linear accelerators called LB1 and LB2.
- The treatment machines are fairly large and are situated in their own treatment rooms. They are accessible via a long corridor which has no door. They can appear intimidating when you first enter the treatment room but most people get used to it very quickly.
- There are changing rooms and gowns available. If you wish to use them, please ask a member of staff.
- There will be music played in the treatment room. It may be possible for the staff to play music from your own mobile device if you prefer. If you do not wish to hear music please ask your radiographers to turn it off.
- If you are concerned about any part of your planning or treatment process please call our **Information and**

Support Radiographer or our Radiotherapy Advice Line.
The numbers are at the end of this booklet.

- It may also be useful to visit our website
🌐 www.beatson.scot.nhs.uk . There is a short video showing what to expect when you attend for radiotherapy.
- Our radiographers are always happy to help so please ask if you have any questions or concerns.

PET & MRI scanning

To assist with planning your treatment, you may be required to have a PET or MRI scan. These scans have to be done in The Beatson West of Scotland Cancer Centre on the Gartnavel Campus in Glasgow, but your treatment can still be delivered in Lanarkshire.

Will I meet other staff?

As well as the radiographers, you may also meet other members of the team, including:

Nursing staff

There are two types of nurses based in the department:

- **Clinical Nurse Specialists** - responsible for managing any side effects you may experience from your radiotherapy treatment. Depending on what area you are having treated, they may see you regularly throughout the course of your treatment or once towards the end of your treatment.
- **General nurses** - these nurses are responsible for general radiotherapy related medical issues and any dressings that need attention during your treatment.

Doctors

There are doctors based in the radiotherapy department. They will see you for medications or further advice if your radiographers or nursing staff feel you need this.

Pharmacy

Pharmacy is located in the main hospital in the basement. If you are not able to get yourself to the pharmacy due to mobility problems, please tell your radiographer or nurse. They will either arrange for you to be taken or will arrange for your medication to be collected.

Beatson Cancer Charity: Wellbeing room

The Beatson Cancer Charity has a dedicated room where their experienced therapists provide a range of complementary therapies such as massage, podiatry, reflexology, reiki and Indian head massage. The therapy service is free and available to all patients during departmental opening hours. If you would like to access any therapies please ask at radiotherapy reception.

What other facilities are available?

There is a vending machine within the Beatson which offers a variety of healthy option refreshments.

The following are available in or around the main entrance of the main hospital:

- **WHSmiths** newsagents and shop.
- Cash dispenser machine.
- **WRVS tea bar** Opening times:
Monday - Friday 9.30am - 4pm and 6.30pm - 8.15pm.
Saturday - Sunday 2.15pm - 4.15pm.
- **Choices Restaurant** located on the lower ground floor of the surgical tower.

Courtesy to staff

Our staff will treat you courteously and with respect. The NHS does not tolerate violence or aggression towards members of staff and will consider prosecuting any person whose behaviour is unacceptable.

Sharing of statistical data

The NHS uses relevant information about you and your treatment to help improve cancer services. Your information is regarded as highly confidential and data protection is taken seriously. Wherever possible, information that identifies you is removed. However, on occasion personal information may be passed on to other relevant NHS bodies. If you wish to opt out of your data being shared, please ask a member of staff to contact the Head of Therapy Radiography.

Smoking

Smoking is not permitted within the centre or hospital grounds.

Where can I get further information and support?

Please remember, if you have any questions about any aspects of your treatment please do not hesitate to ask your doctor, nurse or radiographer.

Being diagnosed with cancer can be a distressing time for you and those closest to you. At times it can be difficult coping with treatment. We have services such as an Information and Support Radiographer, Counselling and a Clinical Psychology team should you need further support. Some of these services are provided on the Beatson Glasgow site. Please ask a member of staff to put you in touch if you think it would be helpful.

Information and Support Radiographer: ☎ 0141 301 7427

There is also a **Radiotherapy Advice Line** if you have any questions regarding your radiotherapy treatment or side-effects of treatment after you have finished. This is an answering machine service and runs Monday to Friday only. Please leave your contact details and we will call you back as soon as possible.

Radiotherapy Advice Line: ☎ 0141 301 7432

The Cancer Centre also has a **Cancer Treatment Helpline for urgent calls**. This is for patients on or within 6 weeks of treatment who have urgent or severe symptoms such as -

- Shivering or flu-like symptoms.
- Temperature greater than 37.5C.
- Gum/nose bleeds or unusual bruising.
- Worsening or sudden breathlessness.
- Leg weakness/difficulty walking.
- Severe nausea/vomiting/diarrhoea/constipation.
- Sudden increased or uncontrolled pain.
- Other concerning symptoms associated with your cancer treatment.

The line is available **24 hours** for emergencies, although it would be helpful if you called early in the day if this is at all possible.

For urgent calls:

Beatson 8am-8pm Tel: 0141 301 7990

National 8pm-8am Tel: 0800 917 7711

Maggie's Lanarkshire

There is a Maggie's Centre in a separate building at the far side of the car park nearest to the radiotherapy department. Maggie's provides a range of practical and social support services that may be helpful to you and your family. There are also courses and workshops you may find helpful. You can drop in without the need to make an appointment.

Tel: ☎ **01236 771199**

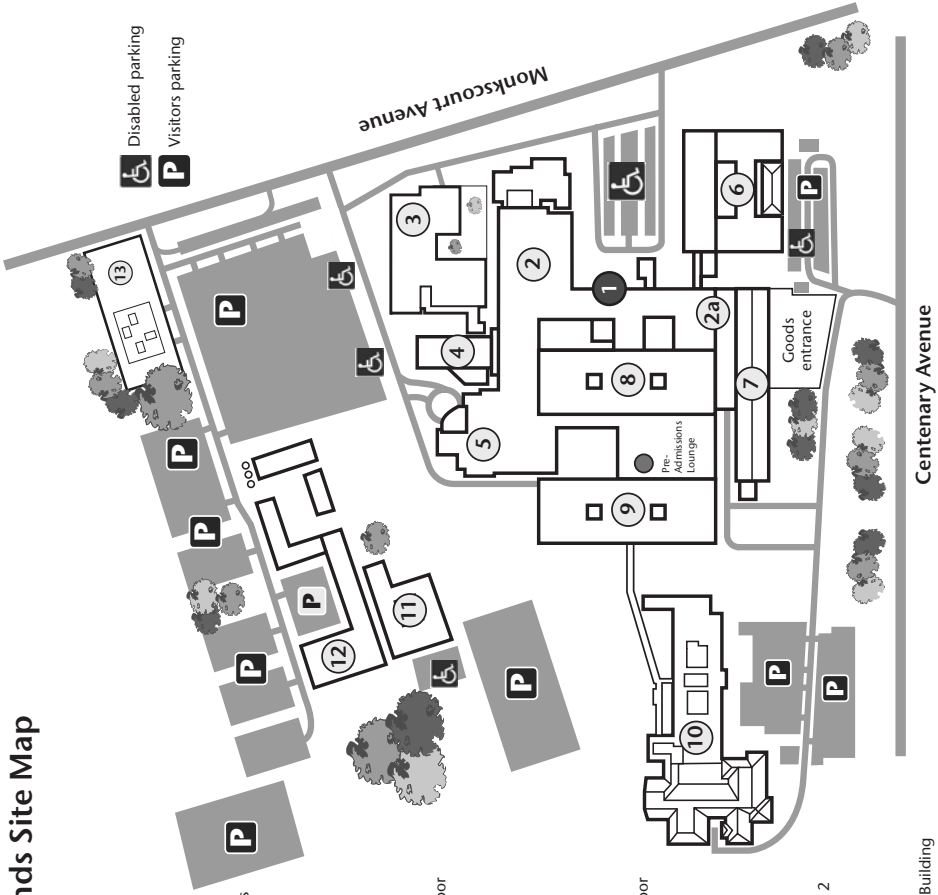
If you would like to know more about our Centre please visit:

🌐 **www.beatson.scot.nhs.uk**

University Hospital Monklands Site Map

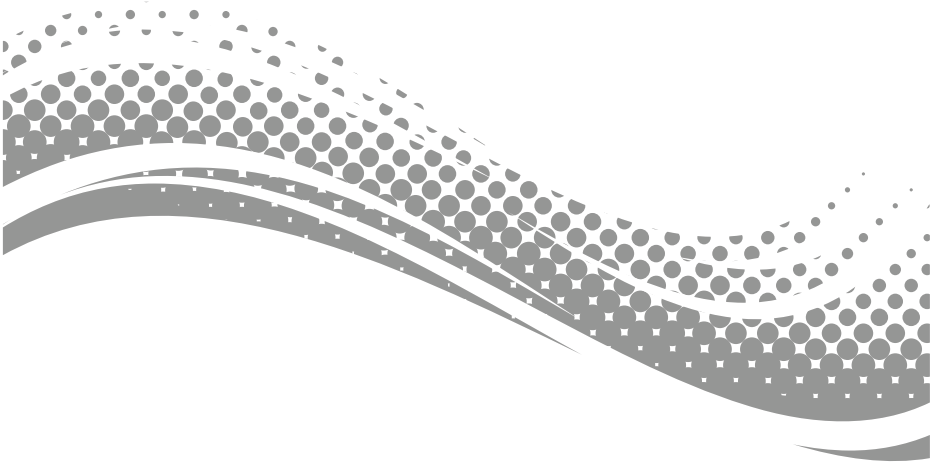
Key to main hospital buildings

- 1 Main entrance, Reception Desk
- 2 Outpatients departments
- 2a Physiotherapy & Occupational Therapy
Medical Illustration Department
- 3 Lanarkshire Beatson
- 4 Day Surgery Unit, Dental and Diabetics Departments
- 5 Accident & Emergency Emergency Receiving Unit
- 6 Psychiatric Department Wards 24 & 25
- 7 Labs, Mortuary
- 8 **East Tower (Medical)**
Pharmacy, IT Department, Estates,
Support Services - Basement
X-Ray, Library, Medical Physics Ground floor
Telemedicine Conferencing Suite 1st floor
Sanctuary 1st floor
Management Suite, Lecture Theatre 1st floor
Wards 14 to 16 2nd floor
Wards 17 to 19 3rd floor
Wards 20 to 22 4th floor
- 9 **West Tower (Surgical)**
Dining Room Basement
Ward 26 Ground floor
Pre-Admission Assessment Unit
and Urology Department 1st floor
Wards 4, 4a, 5, 6 2nd floor
Wards 7, 8, 9 3rd floor
Wards 10, 11, 12 4th floor
- 10 Renal Unit
- Endoscopy Suites
- Infectious Diseases Department Wards 1 & 2
- 11 David Matthews Centre
- 12 Pathology
- 13 Maggie's Lanarkshire at the Elizabeth Montgomerie Building



Notes

Notes



Leaflet Prepared by H. Reid and L. Webster September 2015

Leaflet reviewed by H. Reid & R. Scott September 2023

QA Review by H. Reid September 2023

Review date: September 2025